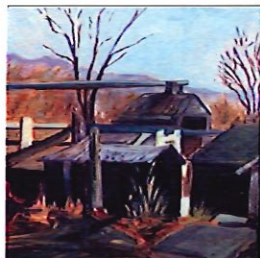




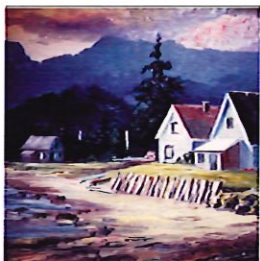
Resident Artists



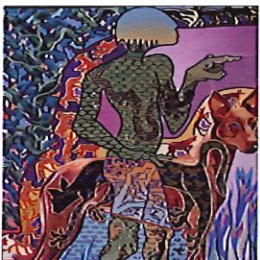
Janice Bridgman



Judith Hudson



Ben Strating



Ian Garrioch

## EXHIBITIONS: August 19 - November 9, 2002

### *On and Off the Wall*

#### **The Resident Artists' Show**

This is a great opportunity to reacquaint yourself with our resident artists' work. We have nine studios, shared by a number of local artists working in many media - oil, acrylic, watercolour, mixed media paintings, photography, wood turning, pottery, silver jewellery and fabric art.

**In the Brown Gallery and The Dorothy Francis Gallery**

**September 17 to October 12**

**Opening Reception: Wednesday September 18, 7-9 pm**

### *Capturing the Moment*

**Janice Bridgman** enjoys painting landscapes in watercolour, acrylic and oils. Her works have been exhibited throughout Vancouver's North Shore, in the Vancouver Court House and, recently, at TOSH in the resident artist collection. Janice's style has been influenced by the Group of Seven and the Impressionists, and she uses both brush and palette knife.

### *Scenes from the Old Island Highway*

**Judith Hudson**, a resident of Duncan, has captured her favourite Island Highway vignettes. She is exhibiting a series of oil paintings that reflects the culture of Vancouver Island in a context that is loosely derived from the Japanese tradition of depicting views along a specific highway.

**Both are in the Brown Gallery**

### *Expressions by Brush and Knife*

**Ben Strating**, who has been inspired by the Group of Seven as well as Tom Thompson, is interpreting his love for the West Coast landscape in his own painting style. He has worked in oils for many years and enjoys the freedom of this medium, which, he says, enables him to convey his visions of his surroundings.

**In the Dorothy Francis Gallery.**

**October 15 to November 9**

**Opening Reception: Wednesday, October 16, 7-9pm**

### *A Dog Show*

In 1972 **Ian Garrioch** joined the Art Faculty of Malaspina University College as an instructor of Painting, Print Making and Drawing and worked at that institution until his retirement in 1999. He also served as Director of the Nanaimo Art Gallery in the 1980s. This group of paintings stands well outside the current mainstream of "Art Think". Ian believes that paintings are mirrors and that the experiences that viewers bring to works of art are as important as the artist's contribution.

**In the Brown Gallery.**

### *Student Workshop Exhibition*

Workshops in 2002 by artists **Bill Townsend** and **Donna Basplay** have resulted in some very interesting student work. TOSH would like to take this opportunity to display these pieces so that everyone can enjoy the creative processes and the ways in which these two excellent instructors have influenced the development of their students.

**In the Dorothy Francis Gallery and Classroom.**

THESE EXHIBITIONS ARE MADE POSSIBLE BY THE GENEROUS SUPPORT OF  
QUALITY FOODS, THWAITES NORRIS INSURANCE SERVICES, IMPERIAL OIL AND WINDSOR PLYWOOD





## EXHIBITIONS: June 25 to September 14, 2002

June 25 to July 2

### *Harmful if Swallowed*

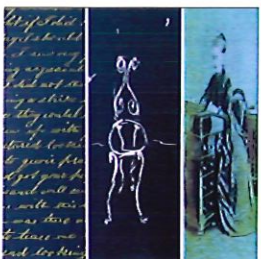
Shayne Brandel, a recent B.F.A. graduate views his paintings as "map works" of his consciousness. "What interests me the most about painting are the decisions that are made during the process...Consequently, my works are heavy and layered and seldom have attached outer meaning." His work is showing in the **Brown Gallery**.



Shayne Brandel

### *Visual Writing*

Jennifer Judge was inspired in her art by a package of letters written by her great-grandfather to her great-grandmother. Many of her pieces are made with the use of a colour copier and the images are printed directly onto rag paper. Her work is showing in the **Dorothy Francis Gallery**.



Jennifer Judge

July 22 to July 28

**Preview and Opening Reception: Monday, July, 22 7-9 pm**

### *Art in Bloom*

The Mid Island Floral Art Club and invited floral designers will present the fourth annual exhibition of floral arranging. On Wednesday, July 24, 1pm at Rotary House there will be a floral design demonstration by **Marion Espin** of Victoria. Admission: \$3 for members and \$5 for non-members



Art in Bloom

July 29 to August 18

**Opening Reception: Wednesday, August 7, 7-9 pm**

### *A Common Thread*

The Qualicum Weavers and Spinners Guild, Nanoose Weavers and Spinners Guild and the Thursday Spinners are collaborating in an exhibition of fibre art. In the **Brown Gallery**.



A Common Thread

The Mount Arrowsmith Needle Arts Guild will exhibit a variety of their outstanding work as well as a collection of historical (1800 to present day) weavings from Sweden highlighting the work of the late **Lily Bohlin**. In the **Dorothy Francis Gallery** and Classroom. Demos every Tuesday, Thursday and Saturday from 1 to 4 pm.



Resident Artists

August 19 to September 14

**Opening Reception: Wednesday, August 21, 7-9 pm.**

### *Resident Artist Exhibition*

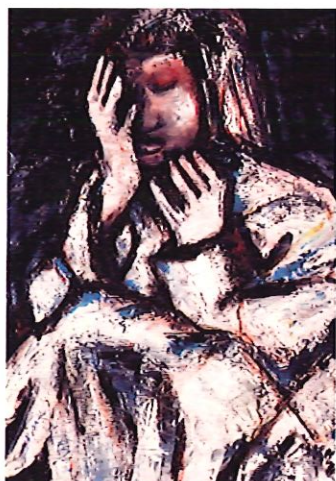
Fifteen "in-house" artists showcase their creations and celebrate their uniqueness as a team. Wednesday, August 28, 7pm: "Out of the Woods" slide presentation with **Jason Marlow**. Friday, September 13, 7pm: "Eyes on You" fashion show with **Mary Leigh Campbell** and jewellery by **Jonathan Rout**.

THESE EXHIBITIONS ARE MADE POSSIBLE BY THE GENEROUS SUPPORT OF  
QUALITY FOODS, THWAITES NORRIS INSURANCE SERVICES, IMPERIAL OIL AND WINDSOR PLYWOOD





Sunday Painters



Mila Kostic



Jason Marlow

## EXHIBITIONS: November 15 to February 16

**November 15 - December 21**

*Exhibition of the Decorative Arts: Christmas, 2002*

### **Special Gifts for Special People**

This is a great opportunity to find the perfect holiday gifts for friends and family. We have invited Vancouver Island's best artisans to display work that will not be found in craft fairs.

The show will be in exhibition format, but the art purchased may be taken home immediately. We will feature the best work of artists such as Larry Aguilar, Bremar Pottery, Mary Leigh Campbell, Jane Hamiton-Khaan, Ted Jolda, Jo Ludwig, Jason Marlow, Christopher Smigh, Bruce Watson, Ann Marie Veale as well as many others.

**In the Brown Gallery and The Volunteer Gallery**

### *Kaleidoscope of Colour*

A show and sale of hand-painted silk artwork by the Silk Worm Club.

**In the Dorothy Francis Gallery**

### *Christmas Specialties*

A vibrant array of seasonal crafts and gifts.

**In the Graig Reid Gift Shop**

**Happy Holidays to All! TOSH will be closed from  
December 21 to January 3**

---

**January 4 - January 19**

### *Sunday Painters*

The Sunday Painters exhibition, now an annual TOSH event, showcases the works of artists who are non-professionals. Prizes will be awarded in specified categories, and all work is juried. This tradition was originally established at the Montreal Museum of Fine Arts by the late Arthur Lismer because he believed that many people create works of art for their own enjoyment. The Old School House Arts Centre agrees and has followed Mr. Lismer's example by instituting the annual Sunday Painters exhibition for nonprofessional artists in our Mid-Island region.

We encourage our members to enter a painting and be a contender for the \$500.00 in prizes. Call for more information.

---

**January 21 - February 16**

### **Mila Kostic** *Untitled*

Mila immigrated to Vancouver from former Yugoslavia-Serbia five years ago. Her work is in oil as well as mixed media. The language of symbol is her interest such as plants, imaginary, sidewalks, stems, non-continuous lines and geometrical shapes.

**In the Brown Gallery**

### **Jason Marlow** *New Work*

Jason studied sculpture, ceramic and metal work at the Birmingham College of Art before experimenting with wood turning. Now over twenty years later he is one of Canada's most distinguished wood turners.

THESE EXHIBITIONS ARE MADE POSSIBLE BY THE GENEROUS SUPPORT OF  
QUALITY FOODS, THWAITES NORRIS INSURANCE SERVICES, IMPERIAL OIL AND WINDSOR PLYWOOD

PRINTED BY MAILBOXES ETC PARKSVILLE